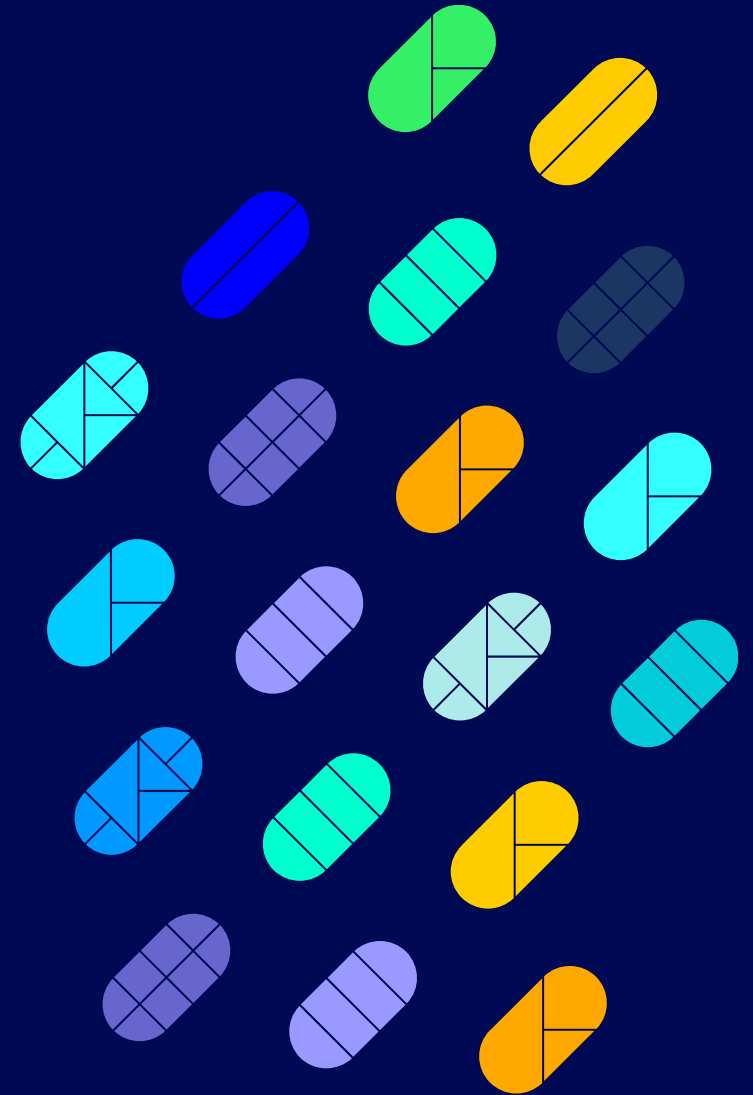


# Interim Report

Scenario modelling - supplementary information



Royal Commission *into*  
**Early Childhood  
Education & Care**



# Deloitte Access Economics modelling outcomes

## Model specification: options to deliver three-year-old preschool

Deloitte Access Economics was engaged by the Royal Commission to develop a model capable of simulating alternative scenarios for delivering universal 3-year-old preschool in South Australia and estimating the associated costs (recurrent and up front) and workforce demand at a state-wide and regional level.

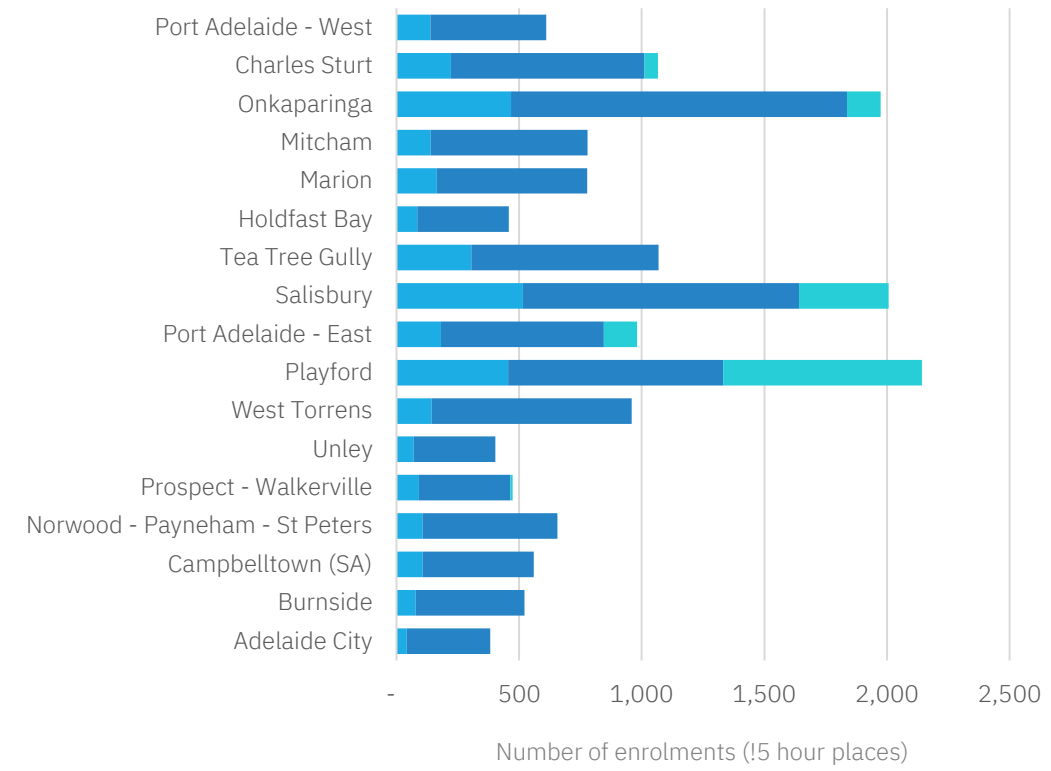
[Model specification: options to deliver three-year-old preschool \(PDF, 557.4 KB\)](#)

	Additional workforce requirements	Ongoing (recurrent) costs	Capital costs	Additional places required
Scenario 1 – government preschool only	<ul style="list-style-type: none"> <li>• 881 ECTs</li> <li>• 1217 educators</li> <li>• 152 other staff (directors)</li> </ul>	\$273.8m in 2023 dollars <i>(\$357.2m in 2032 dollars)</i>	\$102.0 - \$112.4m in 2023 dollars <i>(\$127.4 - \$140.4m in 2032 dollars)</i>	11,130 places Equivalent to 126 new government preschools
Scenario 2 – long day care and non-government preschool only	<ul style="list-style-type: none"> <li>• 631 ECTs</li> <li>• 768 educators</li> <li>• 111 other staff (directors)</li> </ul>	\$93.4 2023 dollars <i>(\$121.8m in 2032 dollars)</i>	\$99.8 - \$110.0m in 2023 dollars <i>(\$124.7 - \$137.4m in 2032 dollars)</i>	9,950 places Equivalent to 71 new services
Scenario 3A – a mixed approach to delivery	<ul style="list-style-type: none"> <li>• 618 ECTs</li> <li>• 880 educators</li> <li>• 112 other staff (directors)</li> </ul>	\$145.8m 2023 dollars <i>(\$190.3m in 2032 dollars)</i>	\$50.5 - \$55.7m in 2023 dollars <i>(\$63.1 - \$69.6m in 2032 dollars)</i>	4,860 places Equivalent to 35 new services
Scenario 3B – a mixed approach to delivery, with equity targeting	<ul style="list-style-type: none"> <li>• 660 ECTs</li> <li>• 880 educators</li> </ul>	\$162.7m 2023 dollars	\$101.2 - 111.2m 2023 dollars	4,500 places Equivalent to 32 new services
Recommended approach	<ul style="list-style-type: none"> <li>• 120 other staff (directors)</li> </ul>	<i>(\$212.2m in 2032 dollars)</i>	<i>(\$126.4 - \$138.9m in 2032 dollars)</i>	Plus 1,080 new commissioned places

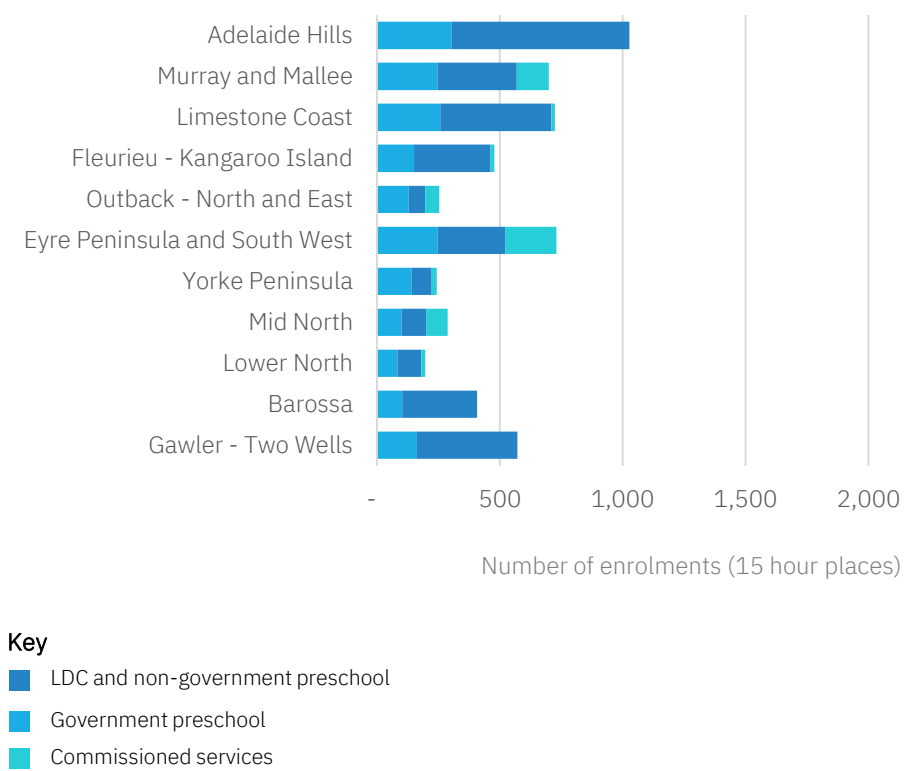
# Regional breakdown – enrolments of 3 year olds

2032 | Scenario 3B outputs | Preschool enrolments\*

Metropolitan



Non-Metropolitan



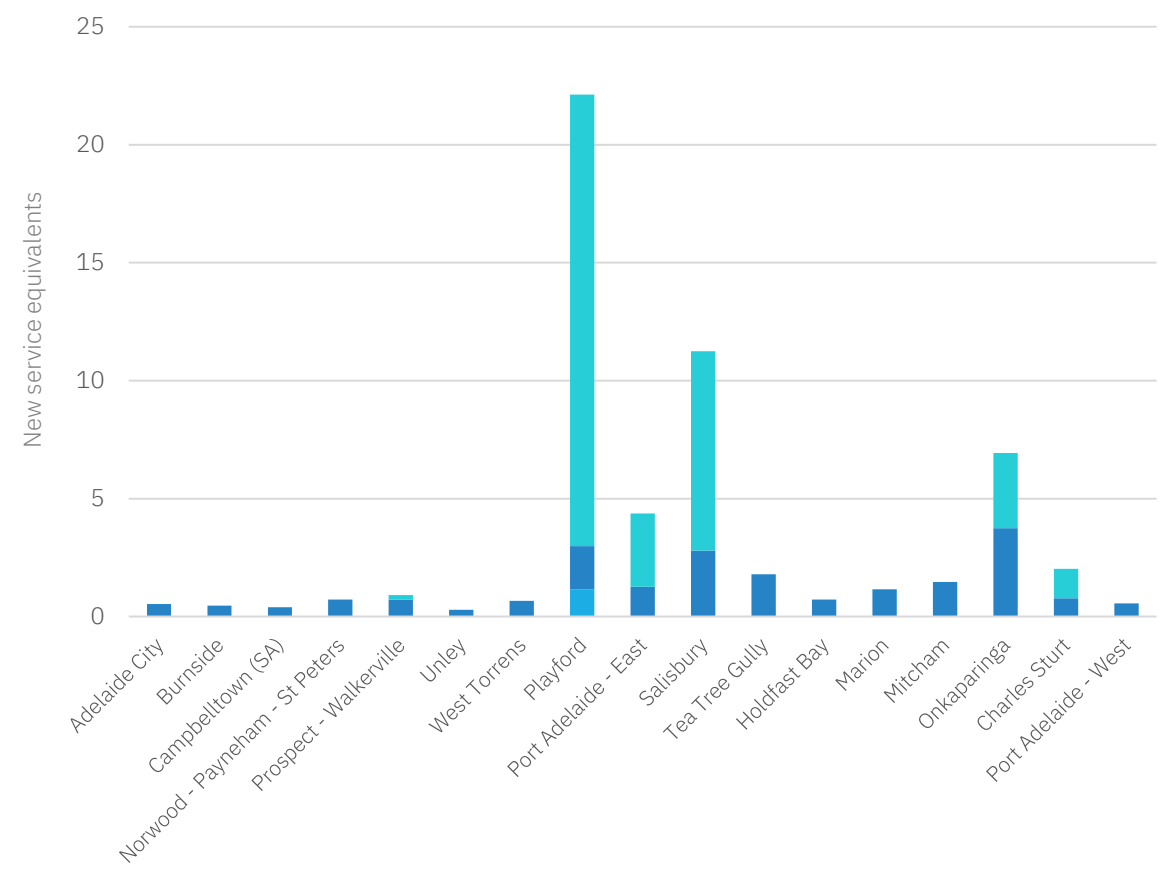
**Key**  
■ LDC and non-government preschool  
■ Government preschool  
■ Commissioned services

\* These figures represent additional 3 year old enrolments compared to current policy settings, so do not include the small number of 3 year olds eligible for government preschool under existing policy settings

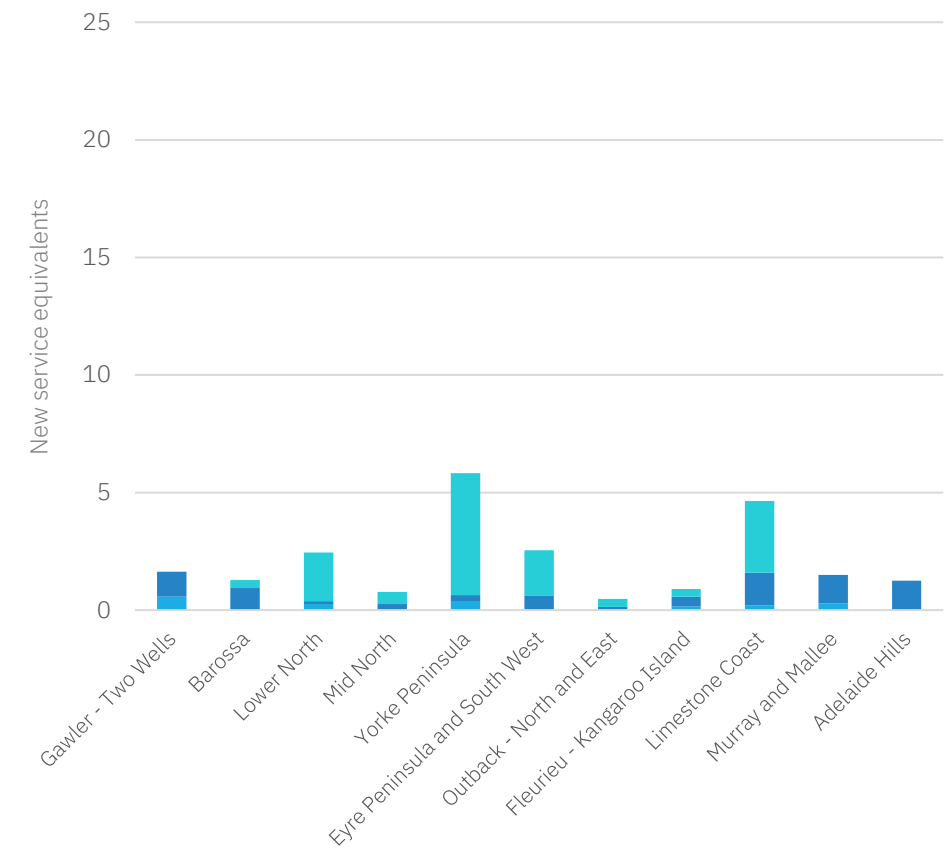
# Regional breakdown - additional new services

2032 | Scenario 3B outputs | New services

## Metropolitan



## Non-Metropolitan



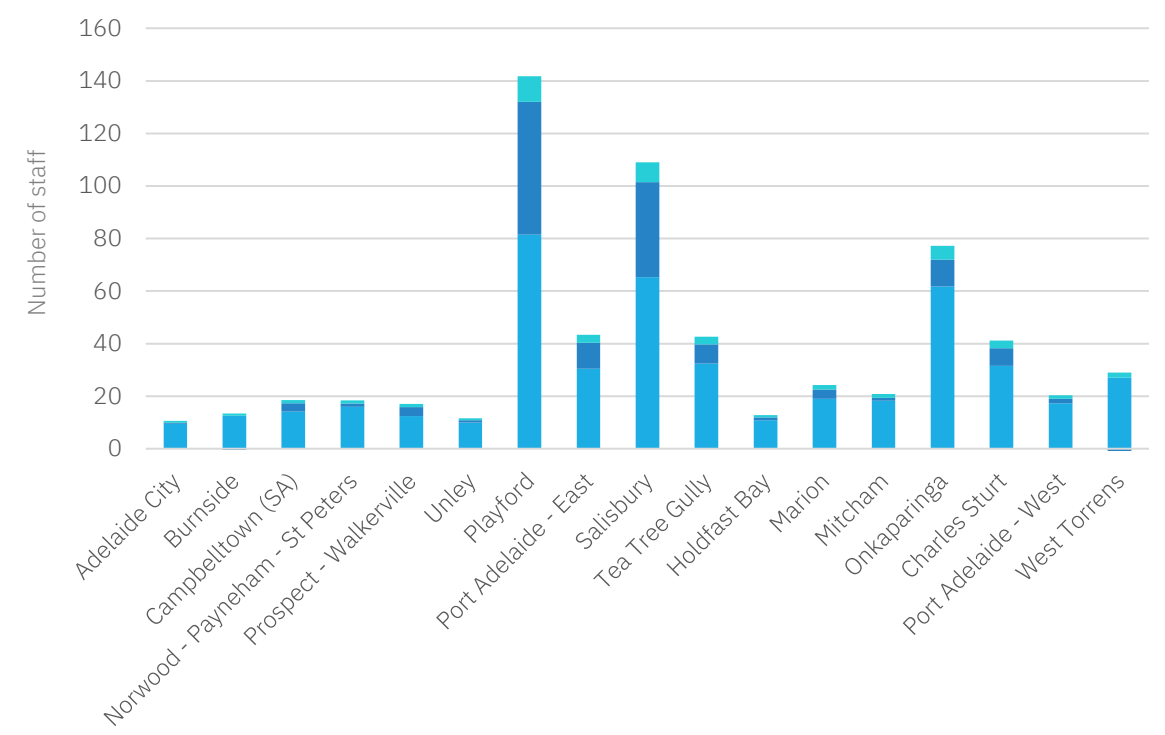
Key

- LDC and non-government preschool
- Government preschool
- Commissioned services

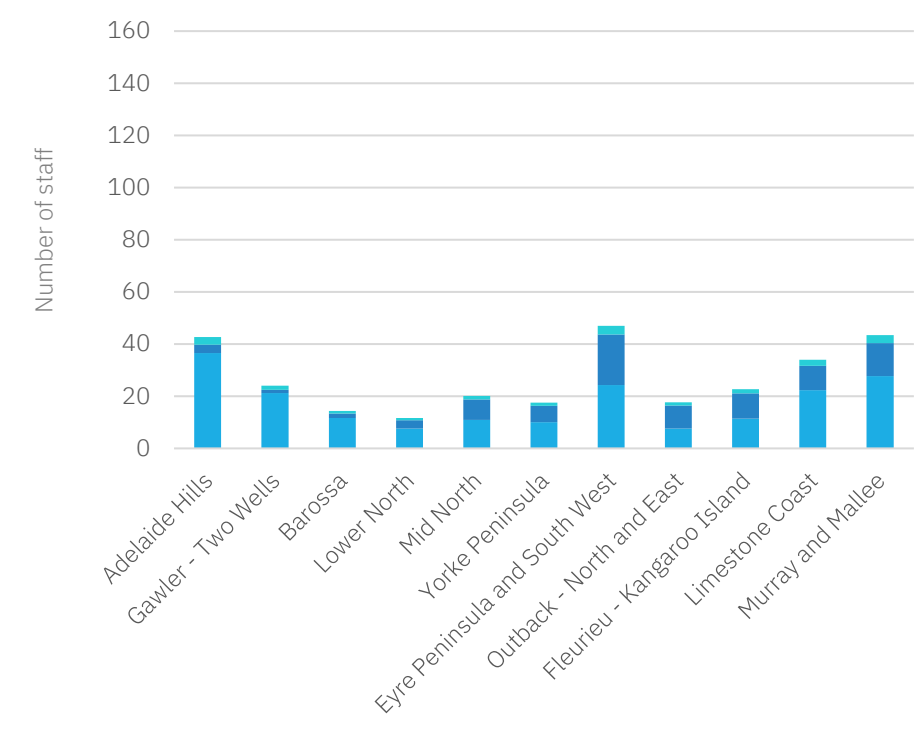
# Regional breakdown – workforce

2032 | Scenario 3B outputs | FTE

Metropolitan



Non-Metropolitan

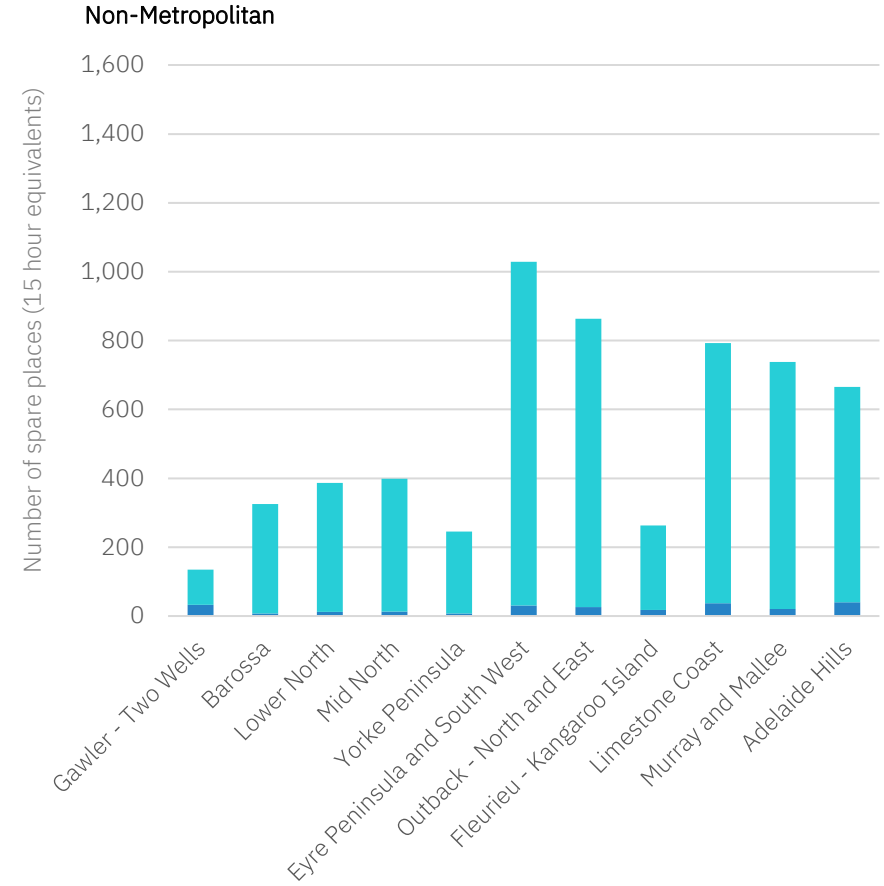
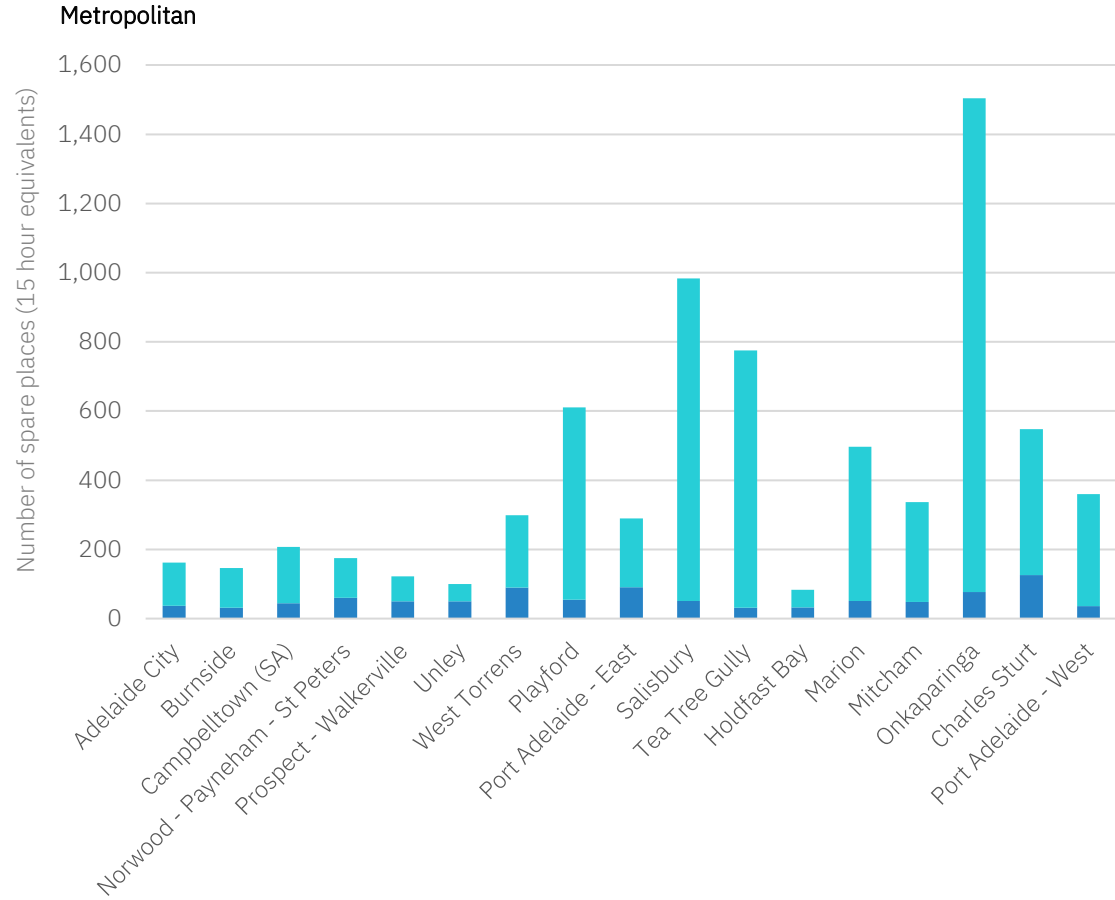


**Key**

- Early Childhood Teachers
- Other educators
- Other staff (directors)

# Regional breakdown – spare capacity at 2022

2022 | 15 hour place equivalents



Key  
■ LDC  
■ Government preschool